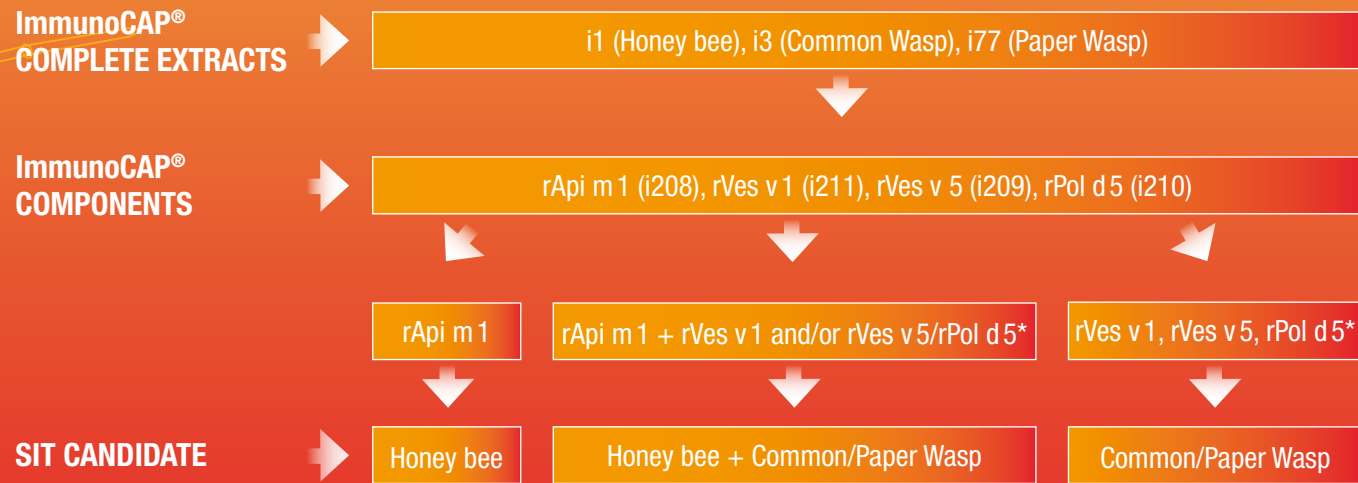


Complete extracts and recombinant components are both needed for precise patient assessment

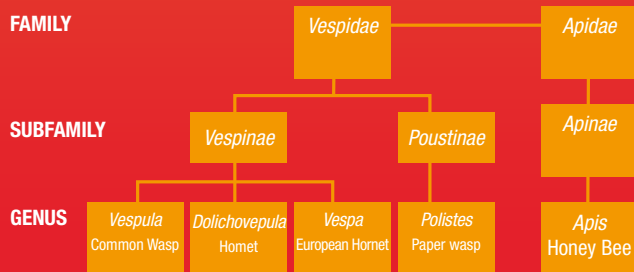


*rPol d 5: Common especially in the Mediterranean areas.

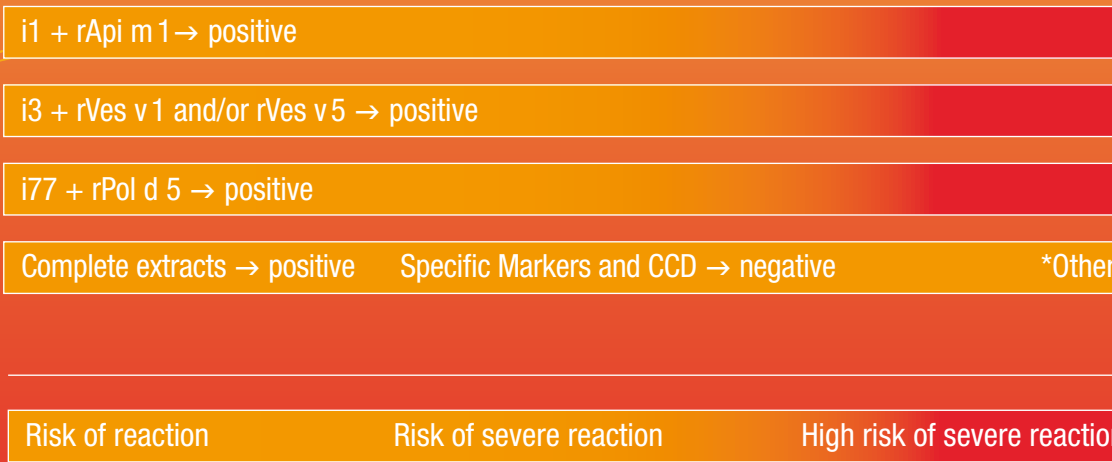
RECOMMENDED TESTS:

ImmunoCAP Tryptase
Measure tryptase baseline levels before SIT to assess risk for severe reactions

MUXF3 CCD o214 (from Bromelain)
– Pure CCD containing only the MUXF3 carbohydrate epitope
– Cross-reactivity marker for CCDs



Complete extracts and recombinant components are both needed for precise patient assessment



*Risk may be explained by other/ unknown species-specific markers.

i1 HONEY BEE
i3 COMMON WASP
i77 PAPER WASP

rApi m 1 – Phospholipase A2 HONEY BEE
 – Associated with clinical reactions to honey bee
 – A specific marker for honey bee venom sensitization

rVes v 1 – Phospholipase A1 COMMON WASP
 – Associated with clinical reactions to wasps
 – rVes v 1 is a specific marker for sensitization to venom of vespids, particularly common wasps and hornets
 – There is a cross-reactivity between Phospholipase A1 from different wasps and hornets

rVes v 5 – Antigen 5 COMMON WASP
 – Associated with clinical reactions to wasps
 – A specific marker for sensitization to venom of vespids, particularly common wasp and hornets
 – There is a cross-reactivity between Antigen 5 from different wasps, hornets and paper wasps

rPol d 5 – Antigen 5 PAPER WASP
 – Associated with clinical reactions to wasps, particularly paper wasp
 – A specific marker for sensitization to venom of vespids, particularly paper wasp
 – There is a cross-reactivity between Antigen 5 from different wasps, hornets and paper wasps